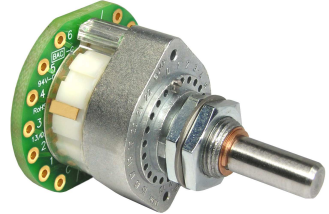


# goldpoint LEVEL CONTROLS



Goldpoint™ stepped attenuators and selector switches are known for their superior precision, transparency, and sonic clarity.

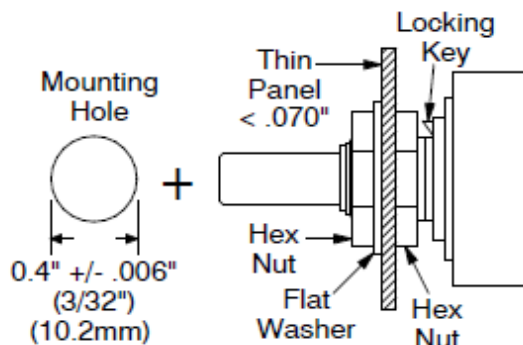


## How to Install a Goldpoint 24-Position Stepped Attenuator or Selector Switch

The front metal sections of Goldpoint 12 and 24 position rotary switches were ingeniously designed in Switzerland or Germany around 1960. A protruding, pointed tab (labeled "Locking Key" below) was employed as an anti-rotation feature. This works great, but entails a little bit more attention to mounting these units on a panel than simply drilling a hole and tightening a hex nut.

**Very Important!** The most common error made when installing one of these units is to fail to:

- 1) Use a second hex nut inside the mounting panel - as shown in **Mounting Method #1**.
- 2) Or cut or file a channel (keyway in the panel) for the locking key to fit into - as shown in **Mounting Method #2**.
- 3) Or file off the protruding locking key - **Mounting Method #3**. This is usually OK because our audio stepped attenuators and selector switches have a lot less turning torque than the original switches in the 1960s, so you don't really need the locking key now. (While filing off the protruding key, clamp the switch shaft (only) in a large, stable vise.)



**Mounting Method #1:** If the mounting panel is thin: up to 0.07", (1/16"), (1.5 mm), you can mount the unit using two hex nuts and a flat washer. This is the preferred and easiest mounting method.

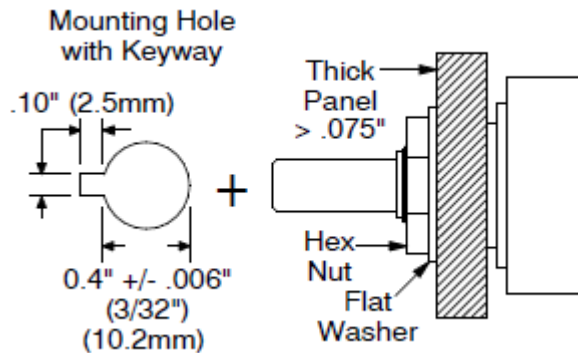
**Important:** Never allow the tip of the locking key to touch the inner hex nut - doing so could warp and damage the unit.

**Mounting Method #2:** If the panel is thicker than 0.07", up to 0.255" (6.5mm), mount the unit with only one hex nut and a flat washer.

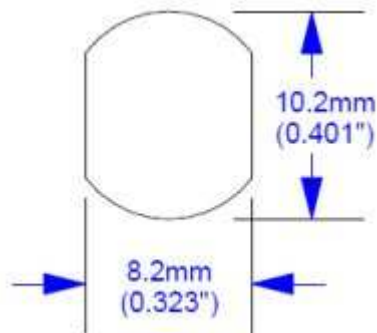
Make a notch in the mounting hole - as shown at left under "Mounting Hole with Keyway".

**Important:** Never allow the locking key to touch the inside of the mounting panel - doing so could warp and damage the unit.

**Mounting Method #3:** File off the protruding locking key - whether the mounting panel is thin or thick. Mount in round hole, no notch, with one or two hex nuts and a flat washer - as shown at left. Before filing, wrap the rest of the unit with kitchen plastic wrap to ensure the filings do not get into the switch contacts.



### Mounting Hole for Goldpoint 47-Position Stepped Attenuators:



Our 47-Position stepped attenuators use a "Double-D" panel cutout as an anti-rotation feature.

However, because our rotational torque is fairly low, you can simply mount them into a round hole (diameter = 0.401" or 10.2mm). If you use a round hole, place a lock-washer on the threaded bushing before sliding it into front panel or put a flat washer under the hex nut on the outside of the front panel.

Maximum panel thickness is about 0.255" (6.5mm) if you mount the attenuator with a hex nut and one flat washer.